

# Crowell Road Intersection Design Project

Main Street/Crowell Road/Queen Anne Road/ Depot Road  
Chatham, Massachusetts



## Public Information Meeting

## MassDOT Project #607405

June 22, 2015

6:00 p.m. at Town Hall Annex



**HOWARD STEIN HUDSON**

Engineers + Planners

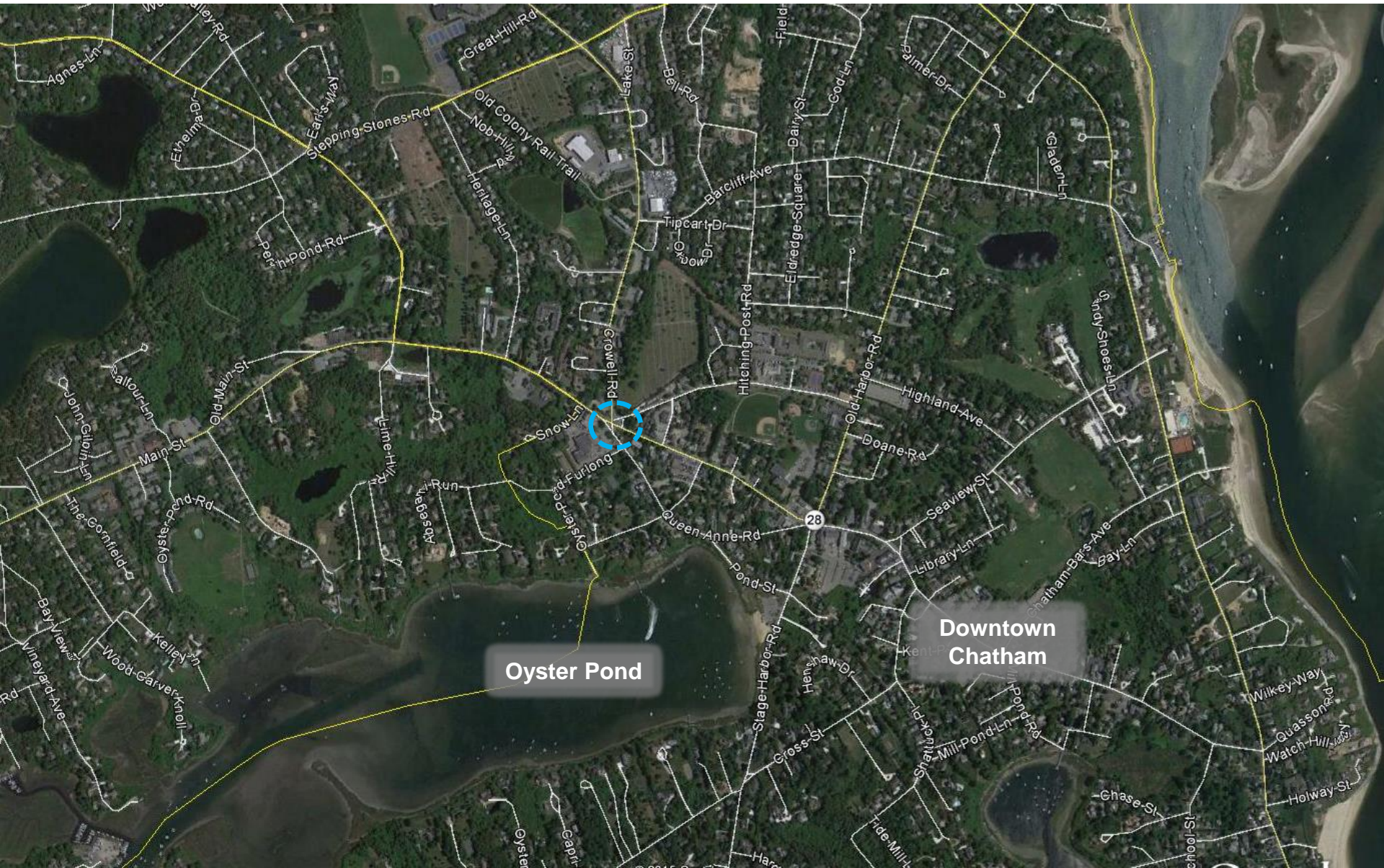
# Agenda

- Overview
- Project History
- Existing Conditions
- Prior Design Concepts
- Next Steps/Process
- Q&A



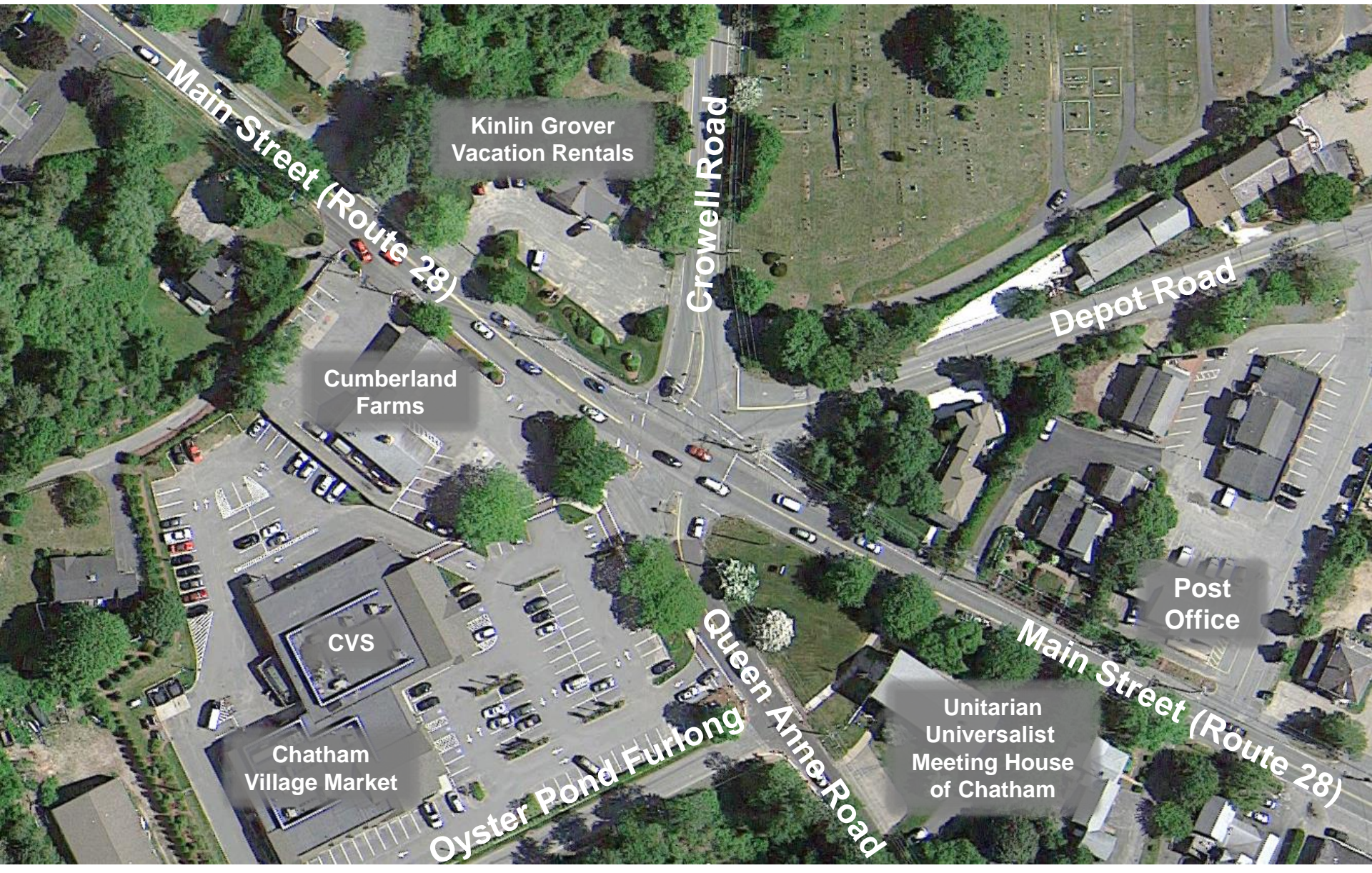
# Project Area

Engineers + Planners



# Project Area

Engineers + Planners



Main Street (Route 28)

Kinlin Grover  
Vacation Rentals

Growell Road

Depot Road

Cumberland  
Farms

CVS

Chatham  
Village Market

Oyster Pond Furlong  
Queen Anne Road

Post  
Office

Unitarian  
Universalist  
Meeting House  
of Chatham

Main Street (Route 28)

# Project History

Engineers + Planners

## Town's Comprehensive Plan (2003)



- **“Work with the state Highway Department to include improvements proposed by the town in the reconstruction of Rte. 28”:**
  - Safety improvements at intersection with Crowell Road
  - Bicycle and ADA-compliant pedestrian improvements
  - Drainage improvements
  - Vehicular access control
  - Streetscape improvements
- **Adopted unanimously at Town Meeting**



HOWARD STEIN HUDSON

# Project History

Engineers + Planners

- **Planning Process**
  - Public Information Meeting – 2/19/2009
  - Proposed Alternative Discussion - 2/11/2010
- **MassDOT Project Initiation Form (PIF) – Feb 2013**
- **Funded for construction through the Transportation Improvement Program (TIP) for 2019**

## Crowell Road/ Route 28 Intersection Improvements

Public Information Meeting  
February 19, 2009

**Crowell Road/Main Street**  
Route 28 Intersection Project  
Town of Chatham, Massachusetts

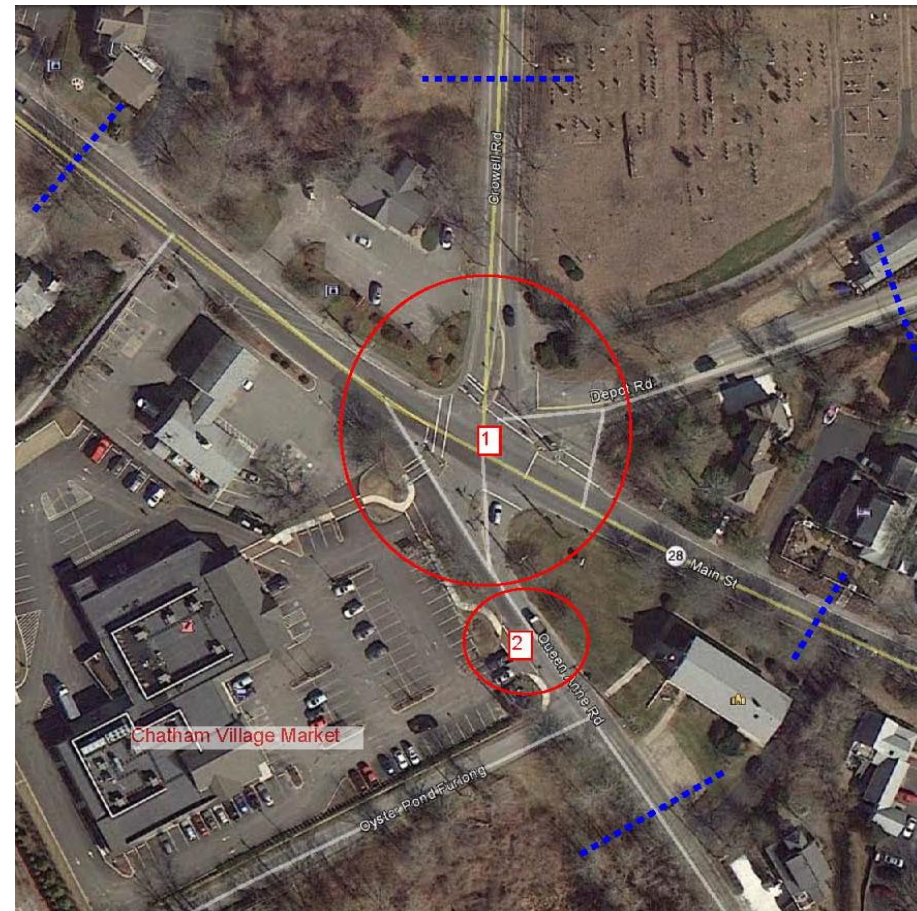


PROPOSED ALTERNATIVES DISCUSSION

February 11, 2010

# Data Collection

- **Survey Information**
- **Turning Movement Counts (TMCs)**
  - Thursday, June 19, 2014
  - Saturday, June 21, 2014
  - Saturday, August 23, 2014
- **Automatic Traffic Recorder (ATRs)**
  - 3-day: June 19-21, 2014
- **Observations**
  - On-going
- **Abutter Meetings**



# Field Observations

Engineers + Planners

- Extensive Queuing



Main Street looking east



# Field Observations

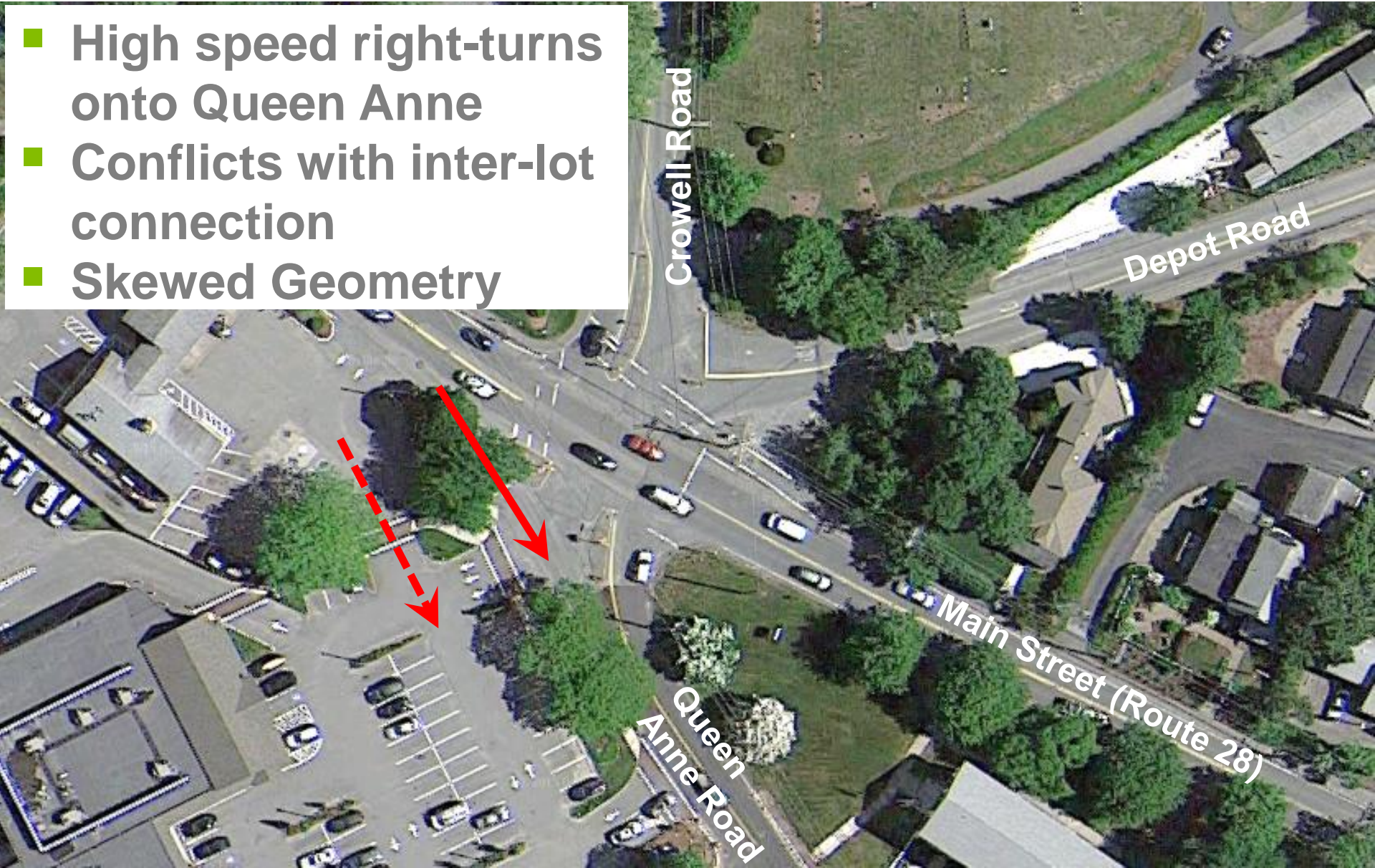
- No left-turn lanes
- Signal indication visibility



Main Street looking east

# Field Observations

- High speed right-turns onto Queen Anne
- Conflicts with inter-lot connection
- Skewed Geometry



# Field Observations

Engineers + Planners

- Steep Grade



Chatham Village Market/CVS looking north

# Field Observations

Engineers + Planners

- No left-turn lanes



Main Street looking west

# Field Observations

Engineers + Planners

- No southern sidewalk
- Narrow shoulder
- Steep grade
- Signal visibility
- Queuing conditions



Main Street looking west

# Field Observations

- Emergency vehicle access



Depot Road looking west

# Field Observations

- No accessible ramps
- No pedestrian phase/signal equipment



# Field Observations

- Limited pedestrian accommodations
- Raised islands
- Signal indications



Crowell Road looking southbound



# Field Observations

- Pavement condition
- Antiquated Signal equipment



*Signal Equipment*

# Field Observations

- Limited bicycle accommodations



Cyclist

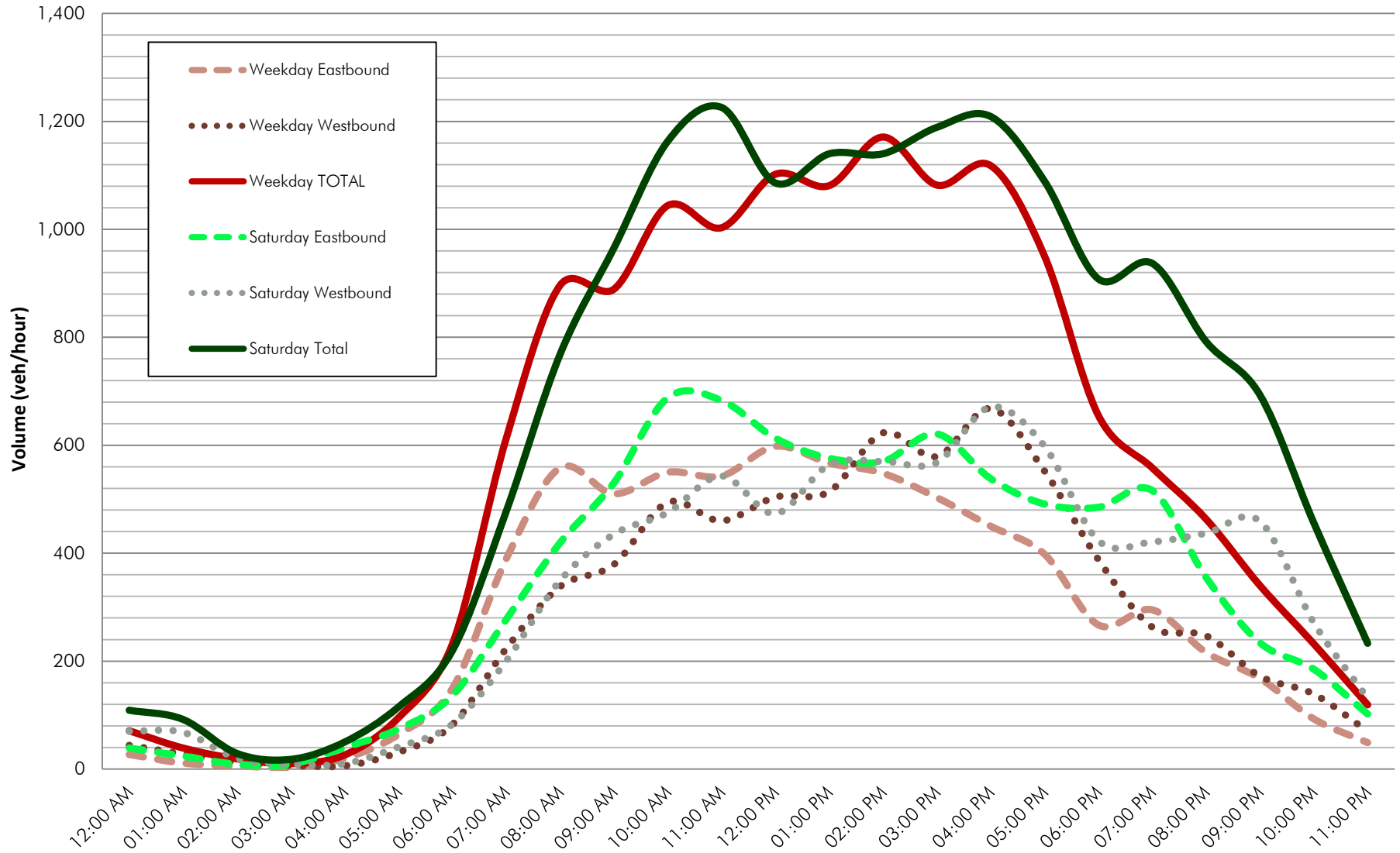
# Bicycle Network



# Daily Traffic – Route 28 west of Crowell Rd.

Engineers + Planners

## June 2014

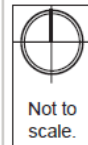
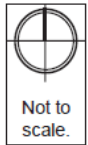
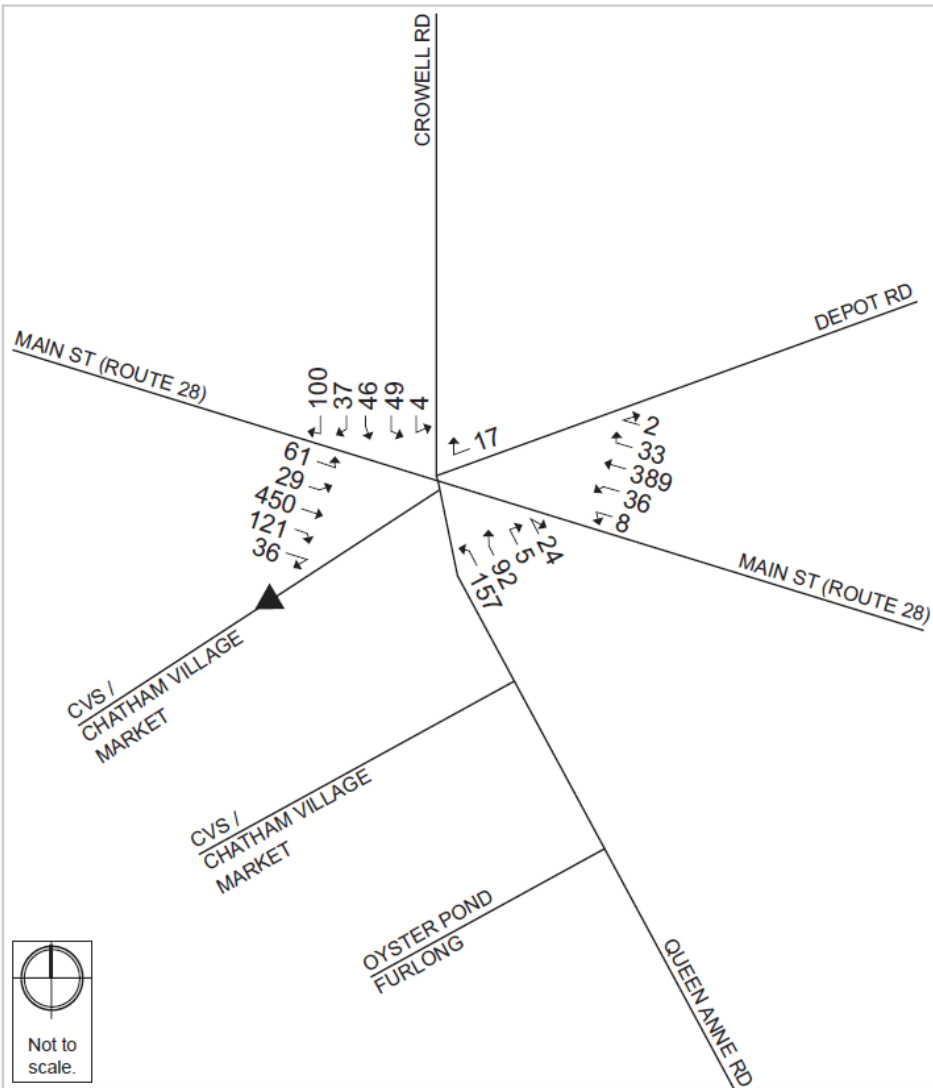
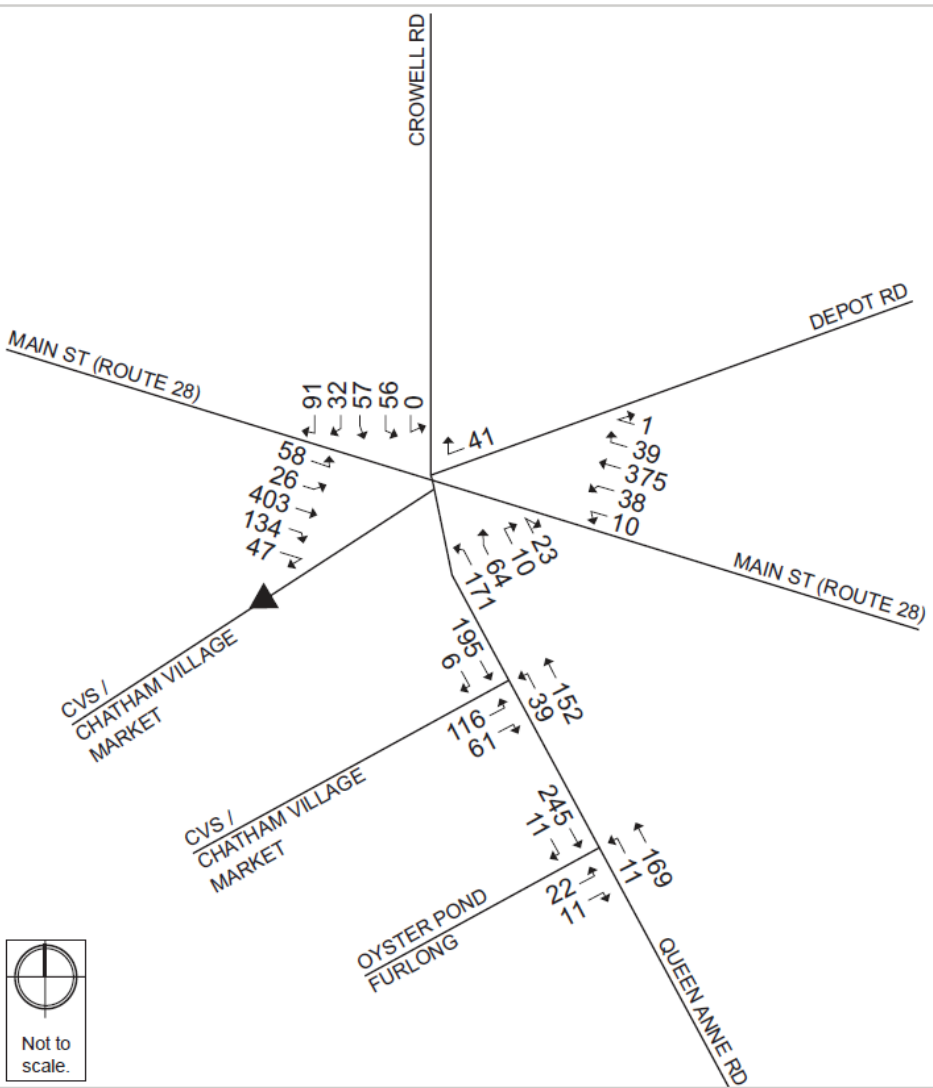


# Traffic Volumes – Saturday Peak Hour (11:45 a.m. – 12:45 p.m.)

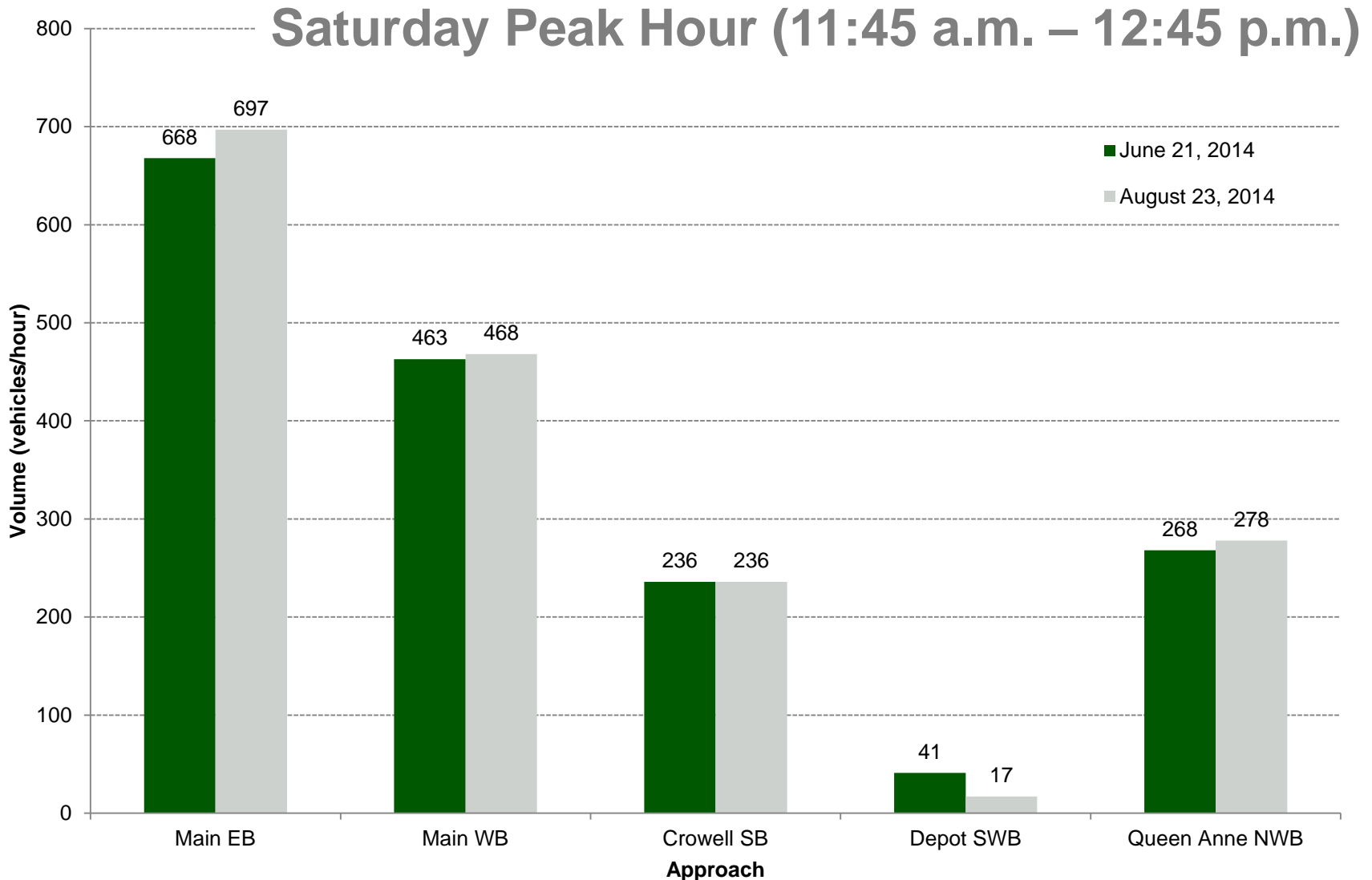
Engineers + Planners

## June 2014

## August 2014



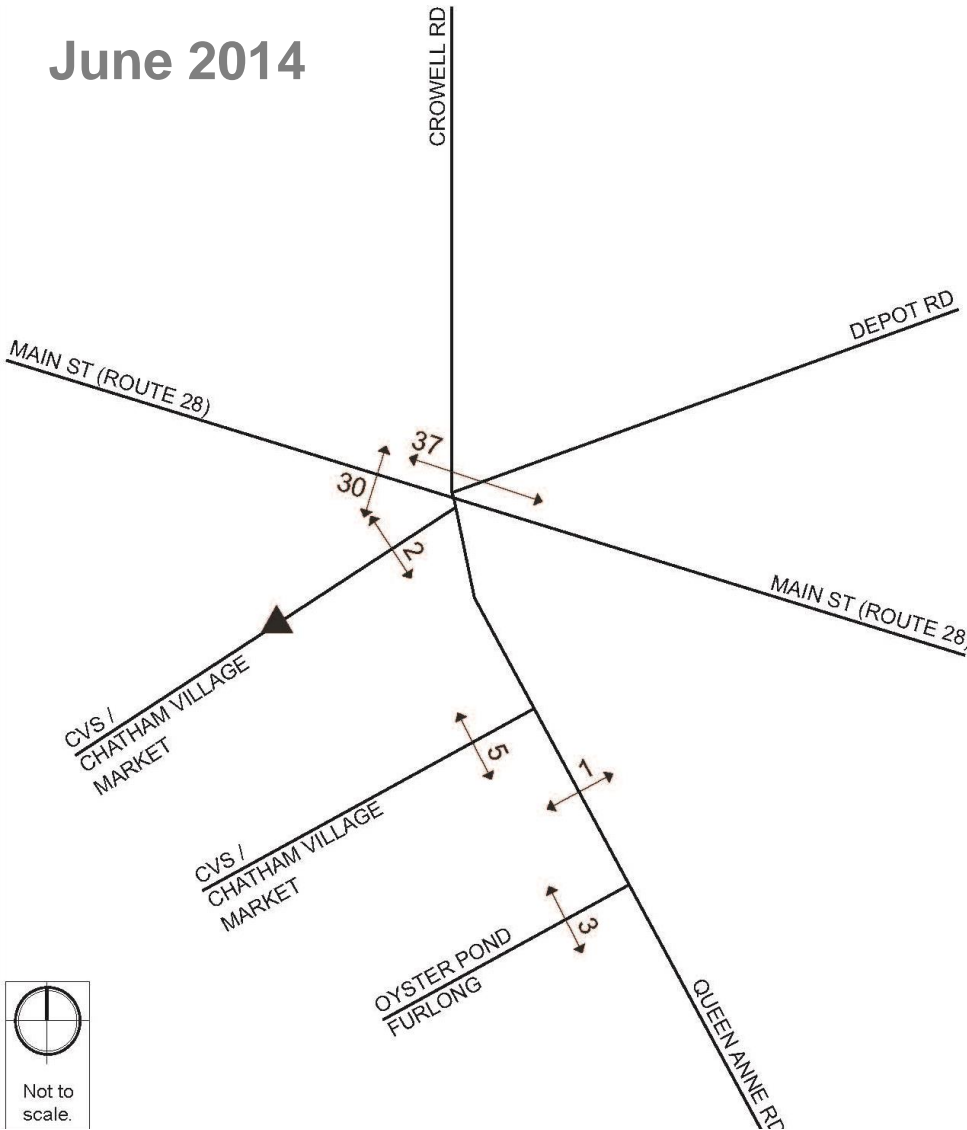
# Hourly Traffic Volume – June & August



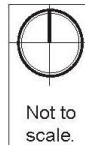
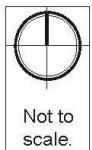
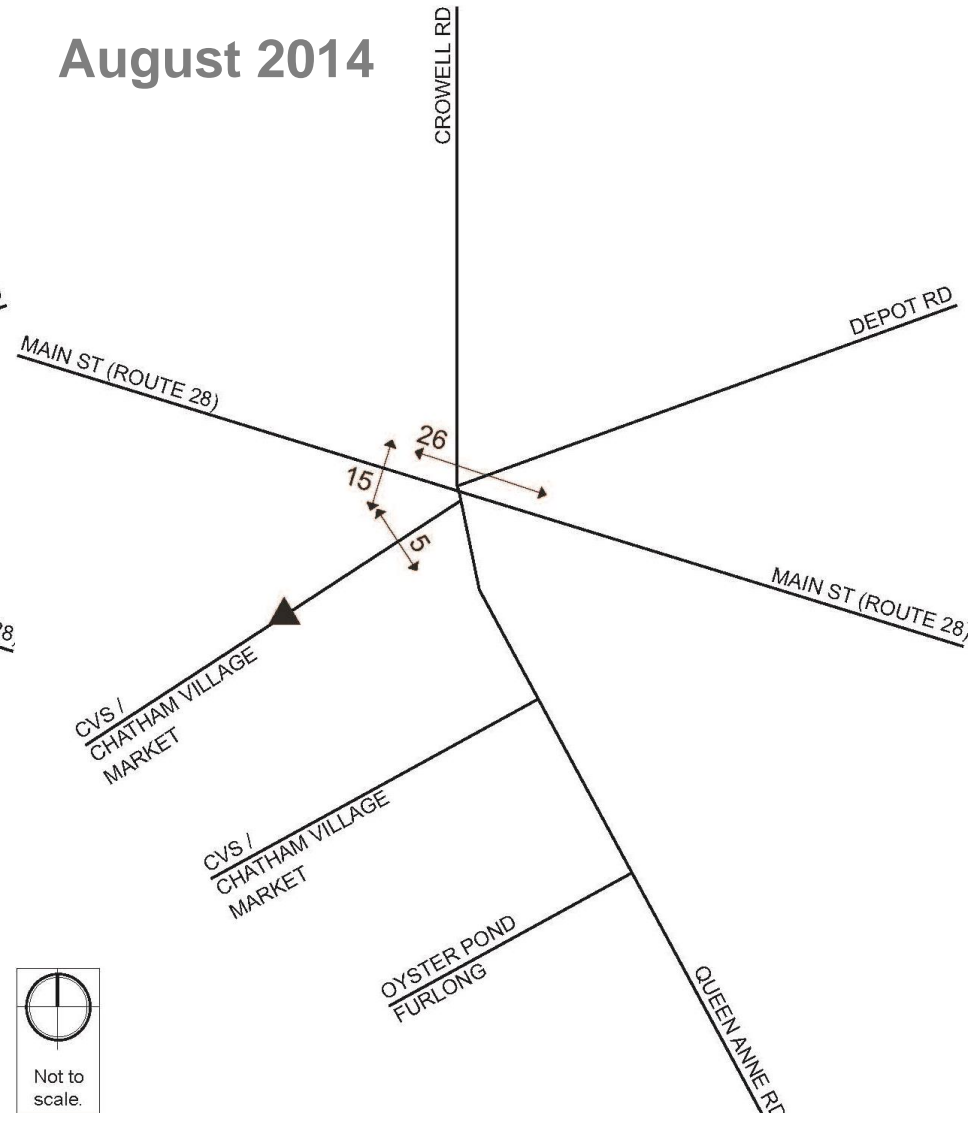
# Pedestrian Volumes – Saturday mid-day

Engineers + Planners

## June 2014



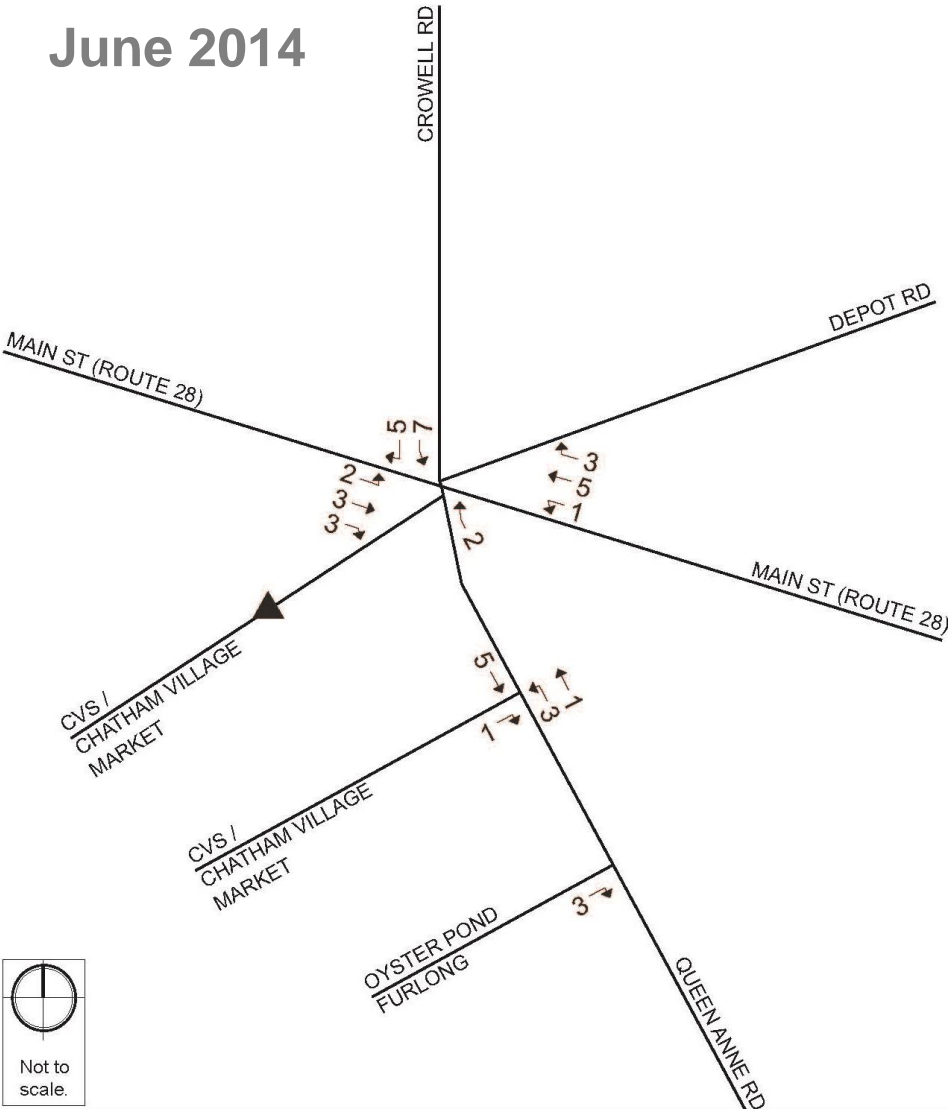
## August 2014



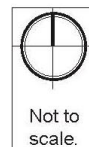
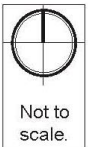
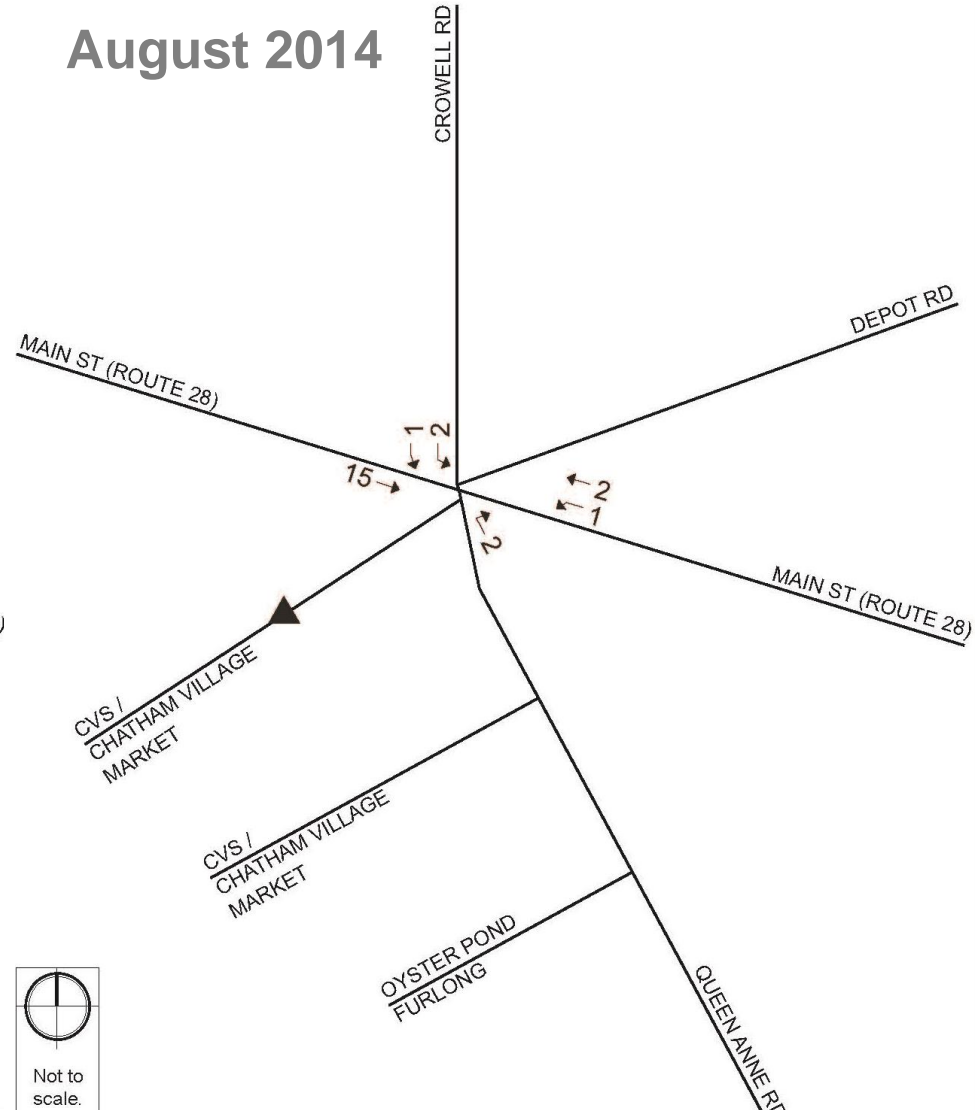
# Bicycle Volumes – Saturday mid-day

Engineers + Planners

## June 2014

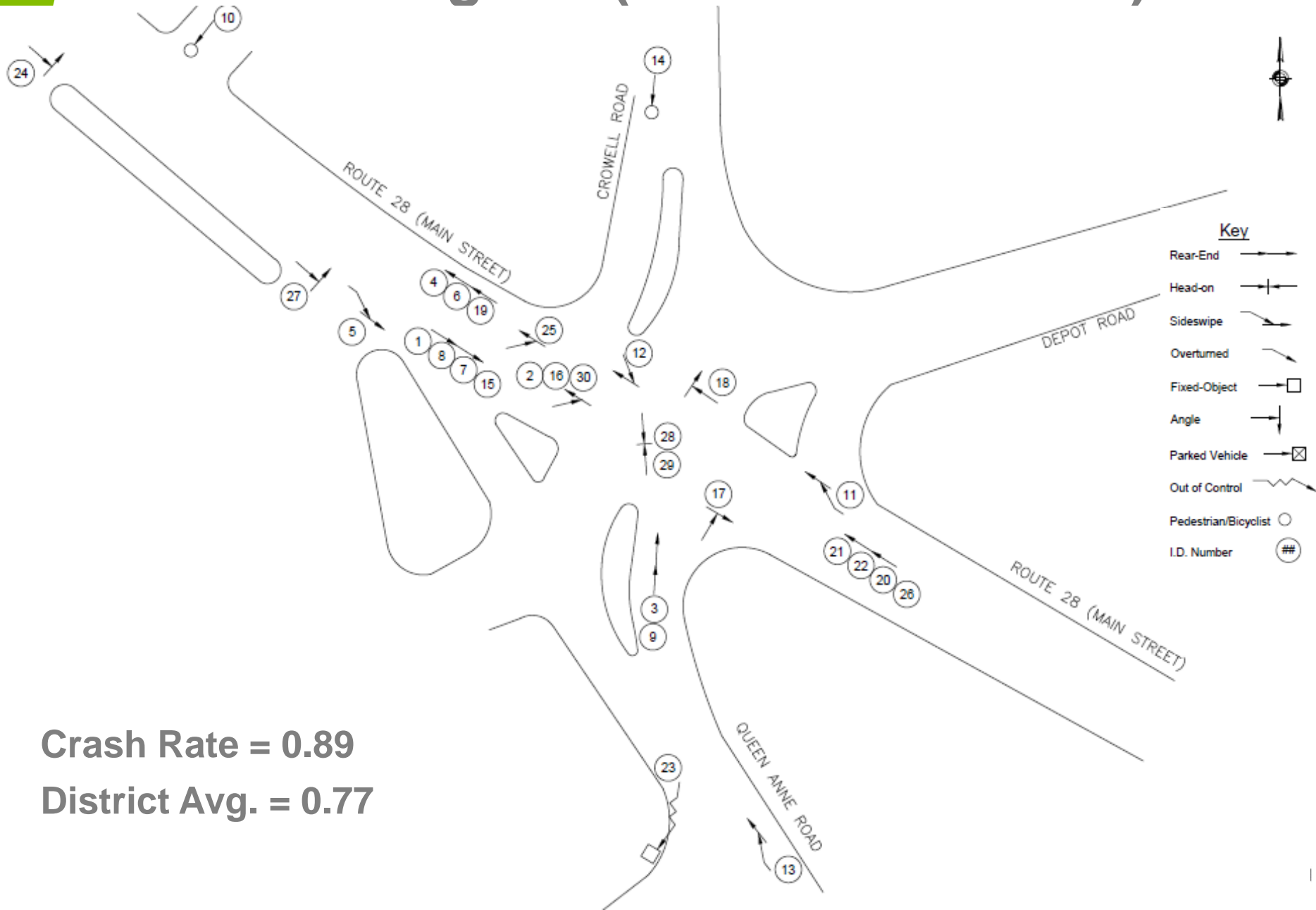


## August 2014





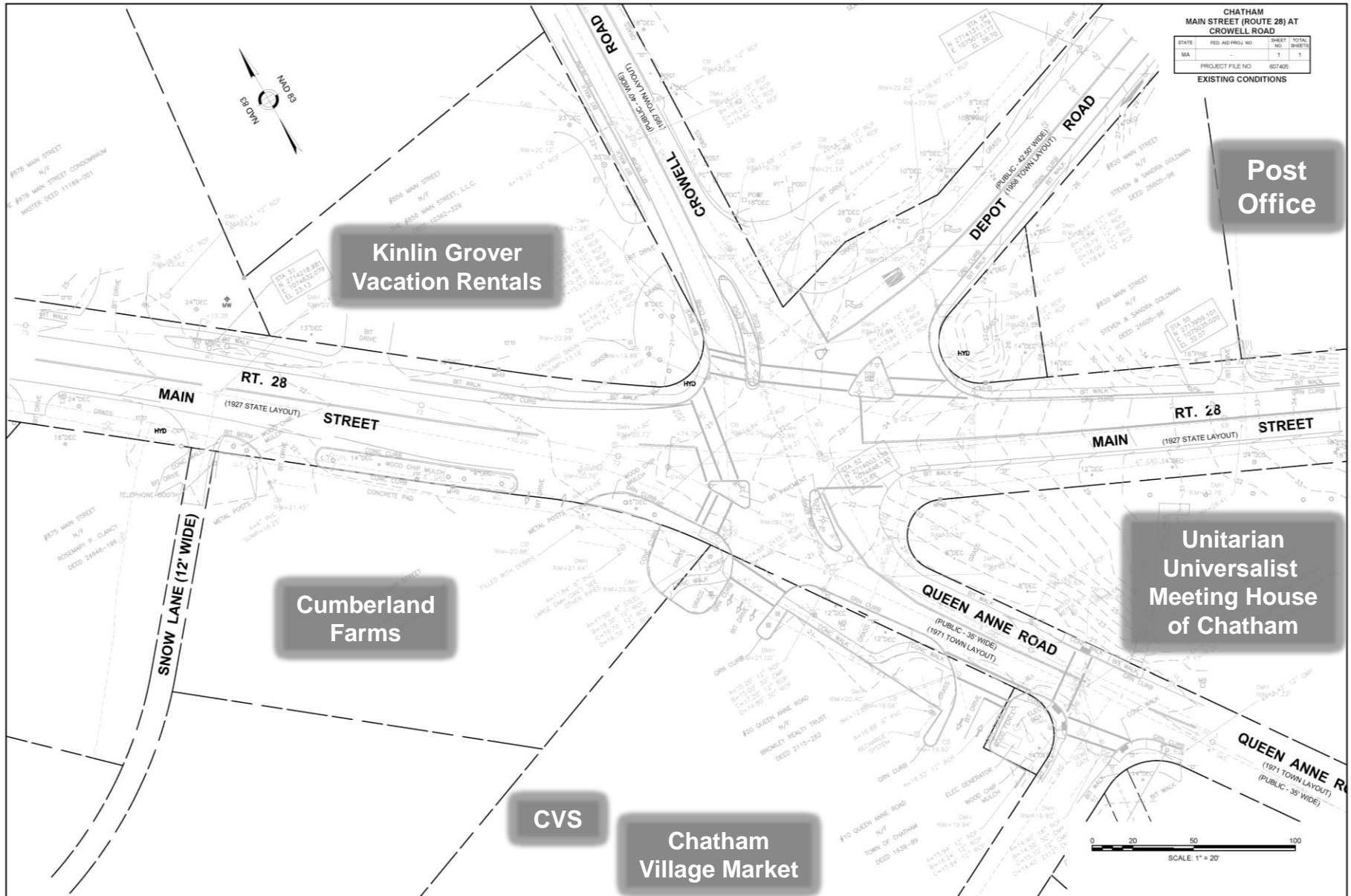
# Collision Diagram (01/2009 – 08/2014)



**Crash Rate = 0.89**

**District Avg. = 0.77**

# Existing Layout



# A brief video



# 2010 Design Concepts



# 2010 Design Concept



## Roundabout Alternative 1



ENGINEERS  
**FST**  
SINCE 1911

Feb. 11, 2010

# 2010 Design Concept



## Roundabout Alternative 2 (With Smaller Radii)



ENGINEERS  
**FST**  
SINCE 1911

Feb. 11, 2010

# 2010 Design Concept



## Upgraded Signal Alternative 1



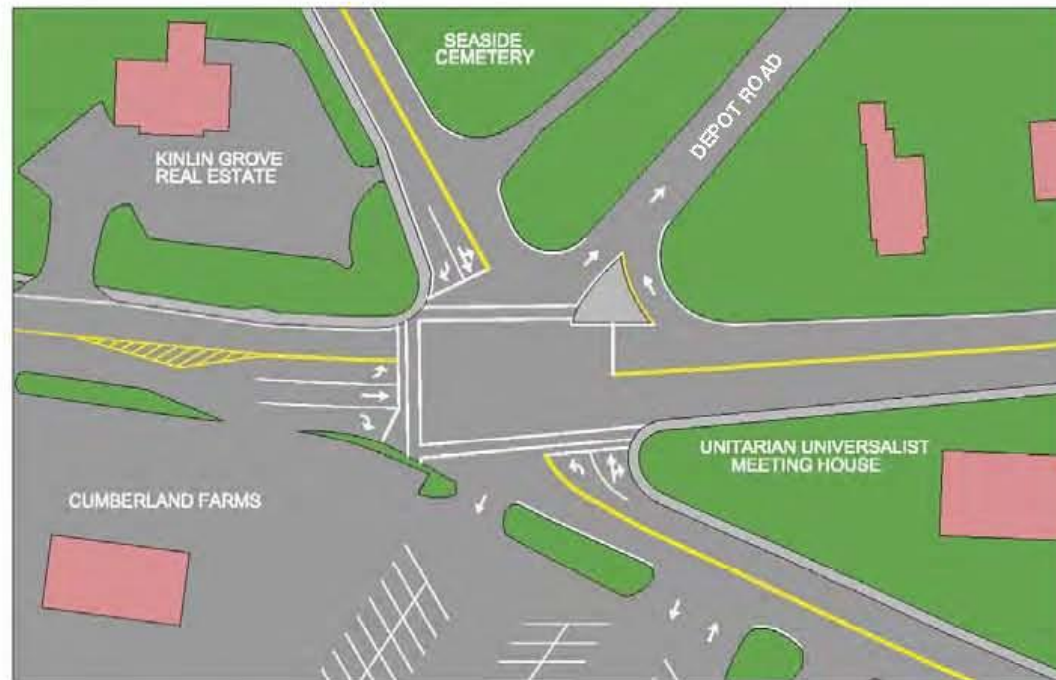
ENGINEERS  
**FST**  
SINCE 1919

Feb. 11, 2010

# 2010 Design Concept



## Upgraded Signal Alternative 2



ENGINEERS  
**FST**  
SINCE 1919

Feb. 11, 2010



# Next Steps

Engineers + Planners

- **On-going Observations**
- **Concept development - Summer 2015**
- **Design Recommendation - Fall 2015**
  - Public Information Meeting



# Questions and Comment

Engineers + Planners

- **Join our stakeholder database to receive updates**
- **Project website: [ChathamCrowellRoad.info](http://ChathamCrowellRoad.info)**
- **Contact us:**

Nathaniel Cabral-Curtis  
Public Involvement Specialist  
Howard Stein Hudson  
11 Beacon Street, Suite 1010  
Boston, MA 02108  
[ncabral-curtis@hshassoc.com](mailto:ncabral-curtis@hshassoc.com)  
Telephone: (617) 482-7080 x236



HOWARD STEIN HUDSON